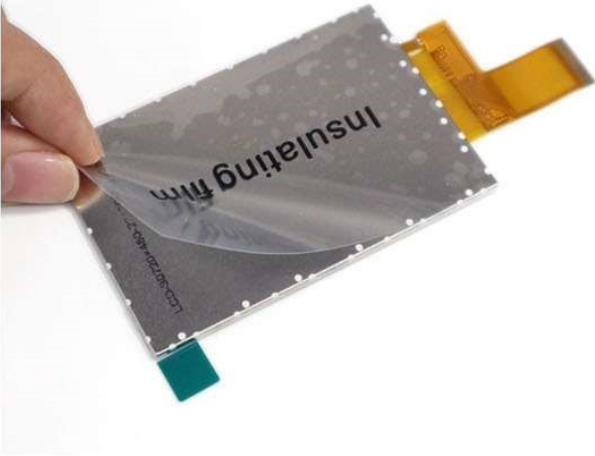
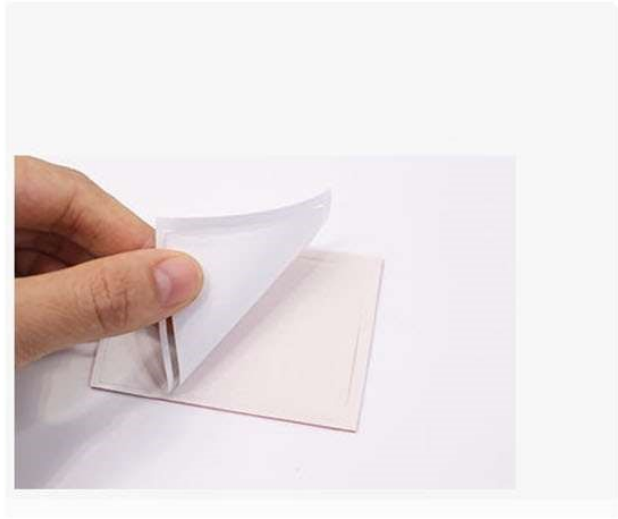


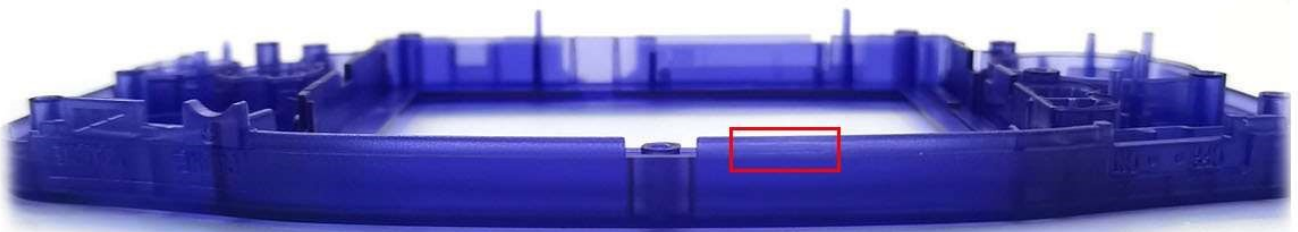
1. Apply the insulating film on the metal surface.



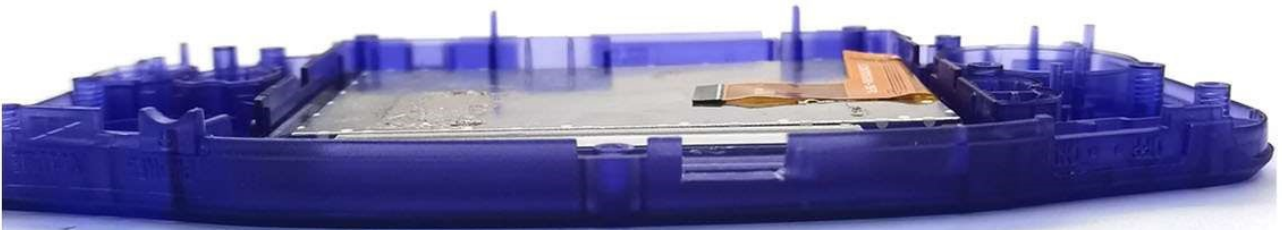
2. Peel off the white side of the double-sided tape.



Before cutting



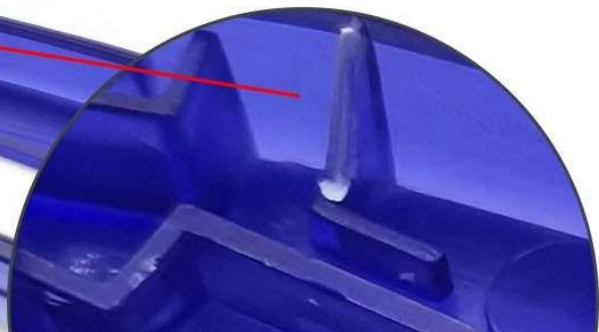
After cutting



Before cutting



After cutting





Apply the double-sided tape on the shell case

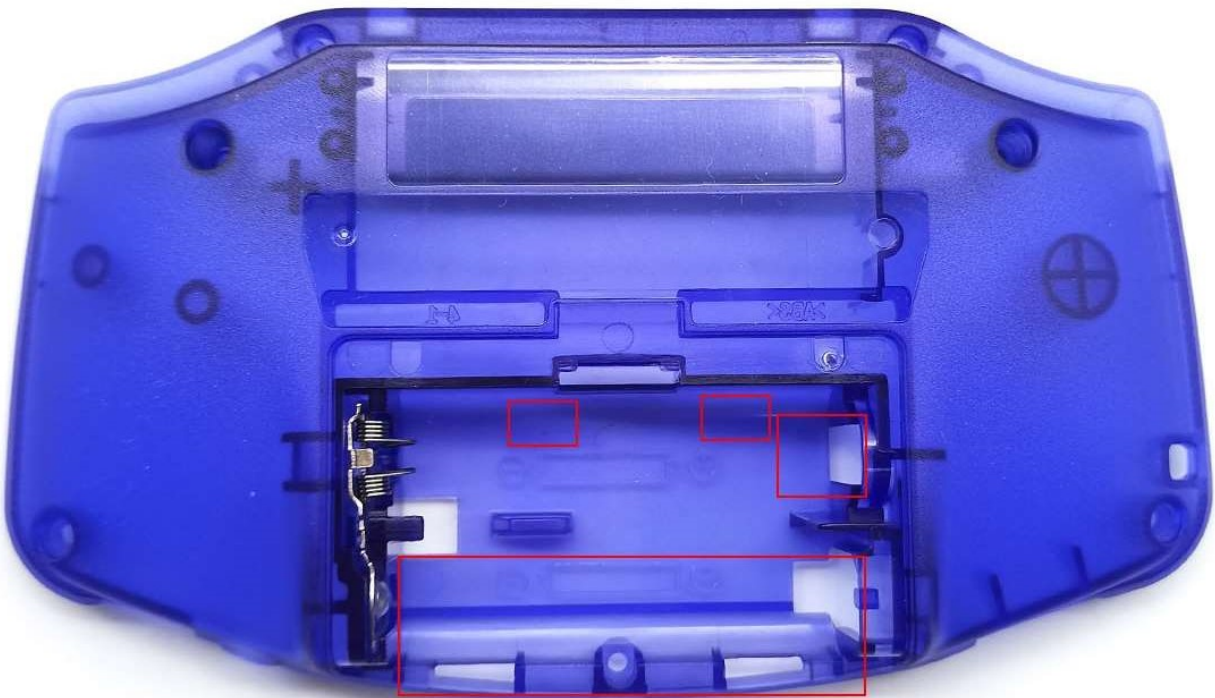


Note: Since the housings are produced by different manufacturers, some housings may be necessary to be trimmed.





Before cutting

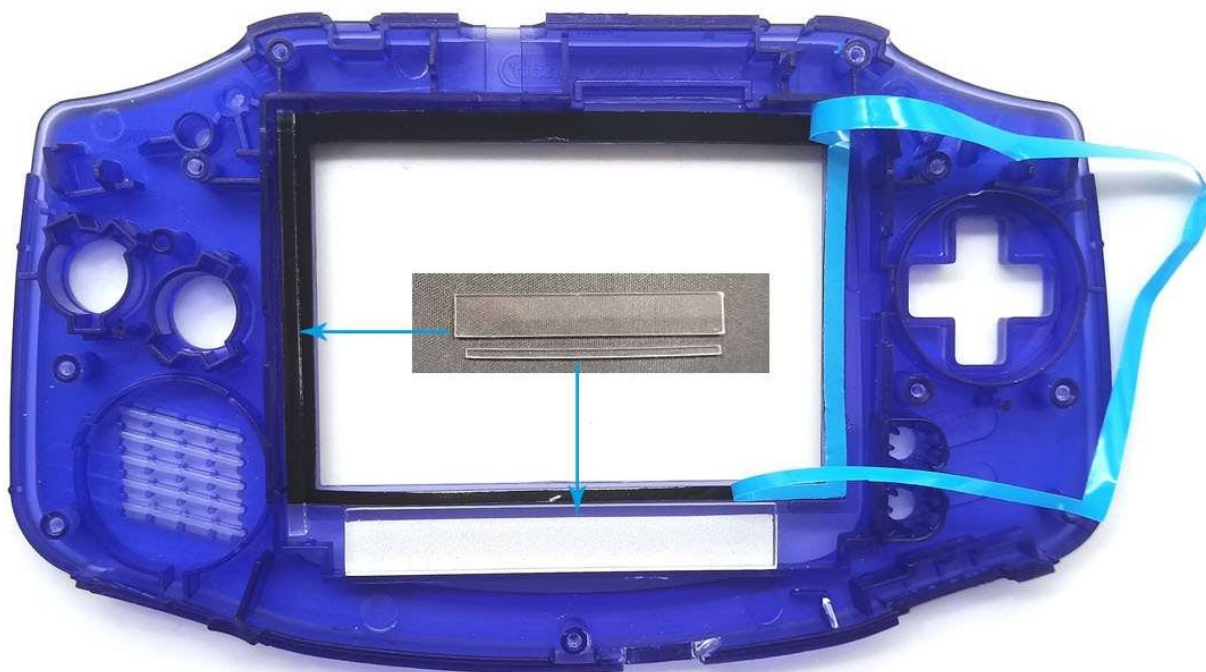


After cutting



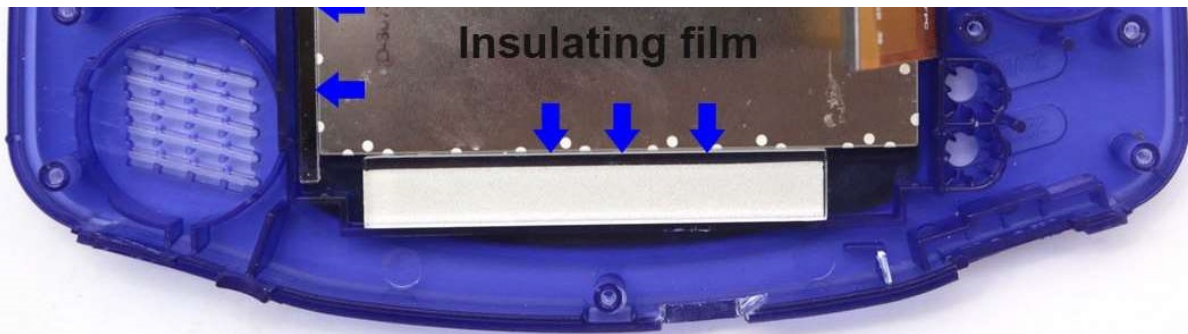


Note: Since the housings are produced by different manufacturers, it may be necessary to move the position sticks slightly.

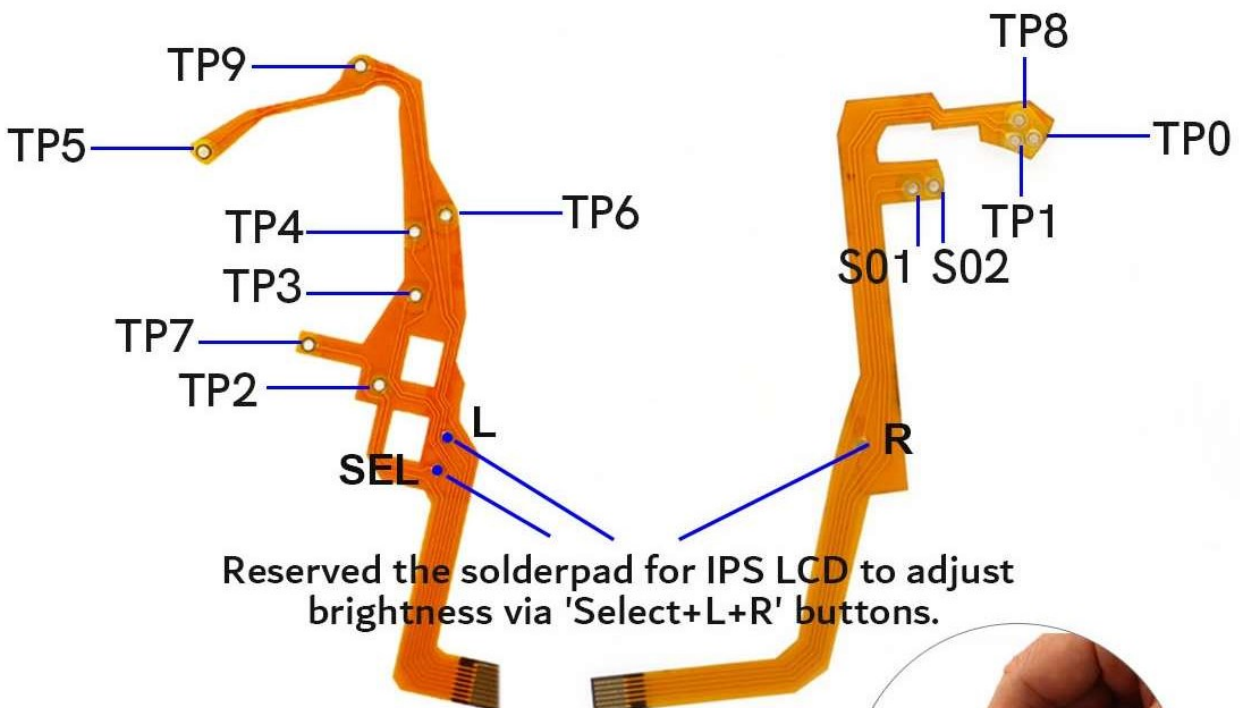


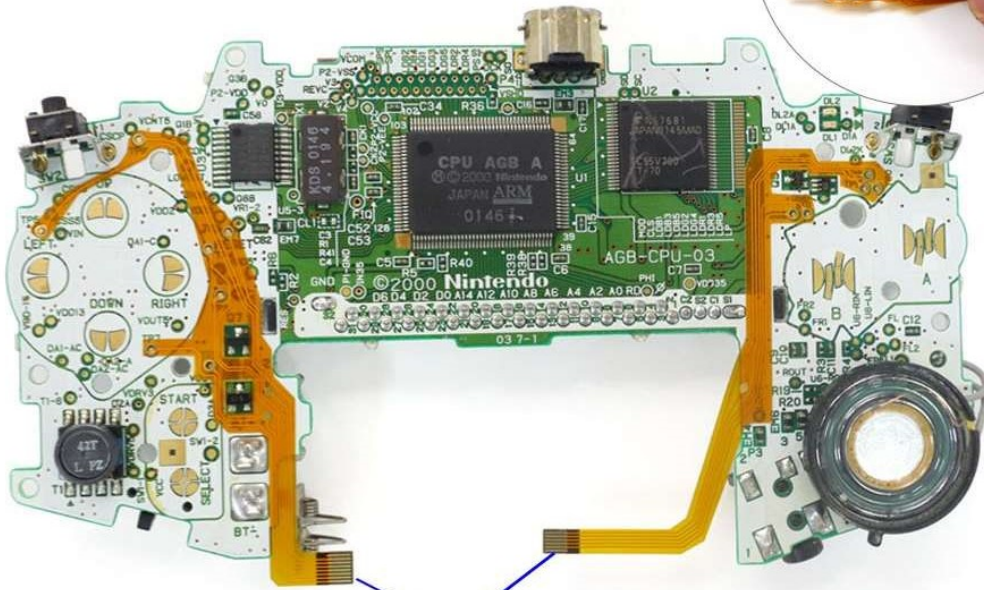
Put the LCD in the shell like below picture.





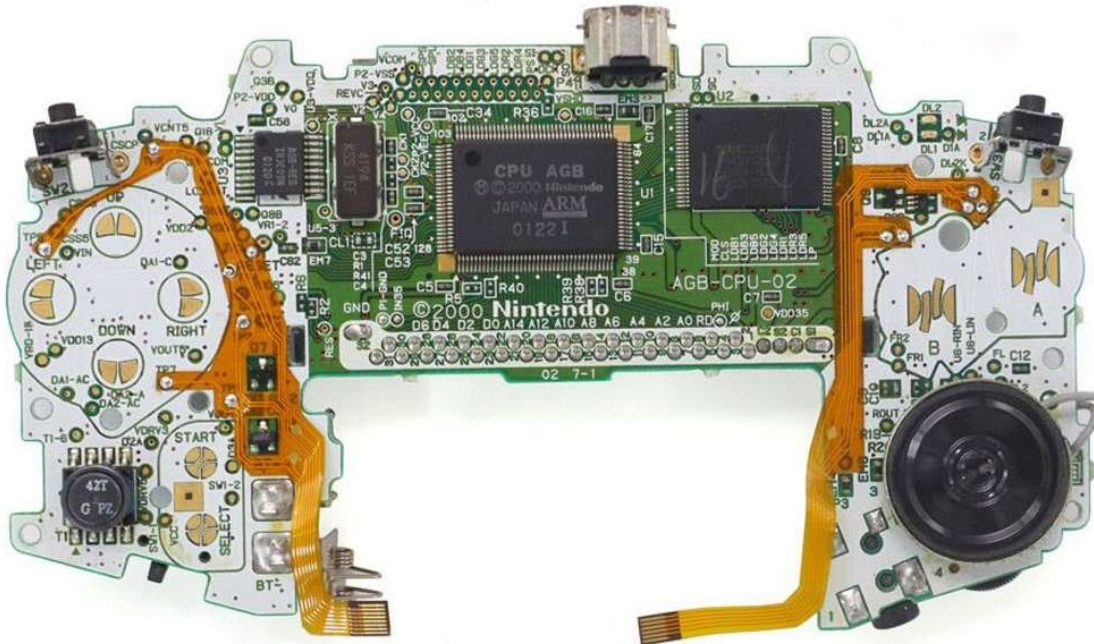
Put the PCB in the shell like below picture.
Then, connect the flex cable and the LCD.





Paste the flex cable on the motherboard.

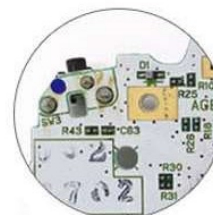
Soldering the flex cable



Use multimeter to measuring the solderpad

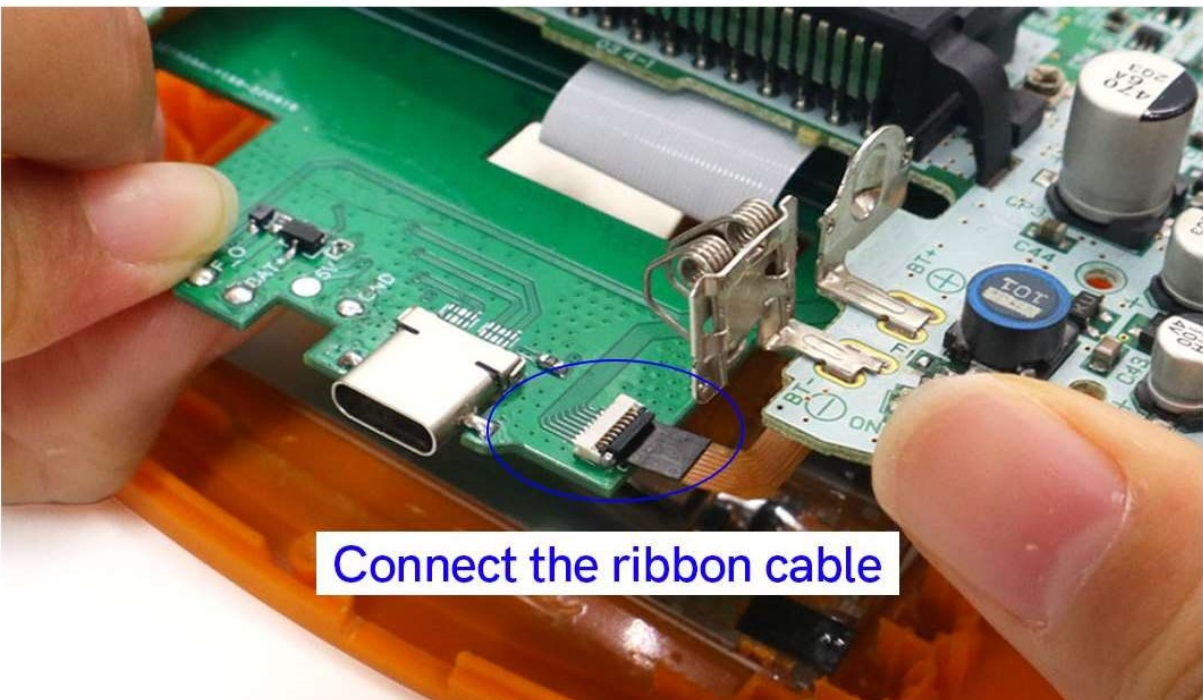
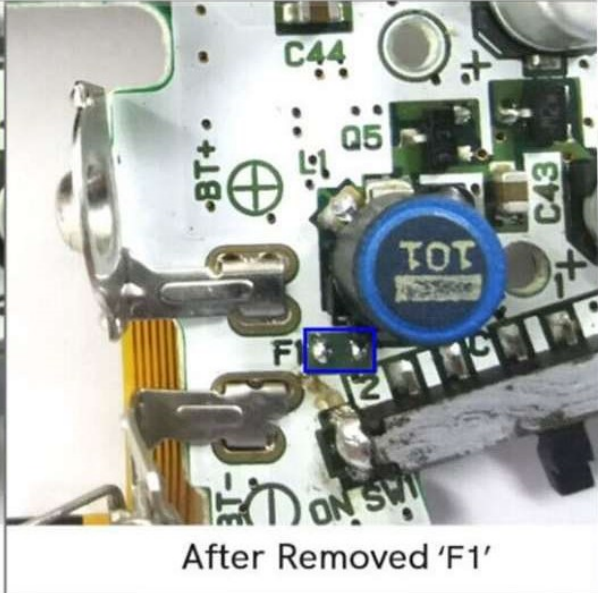
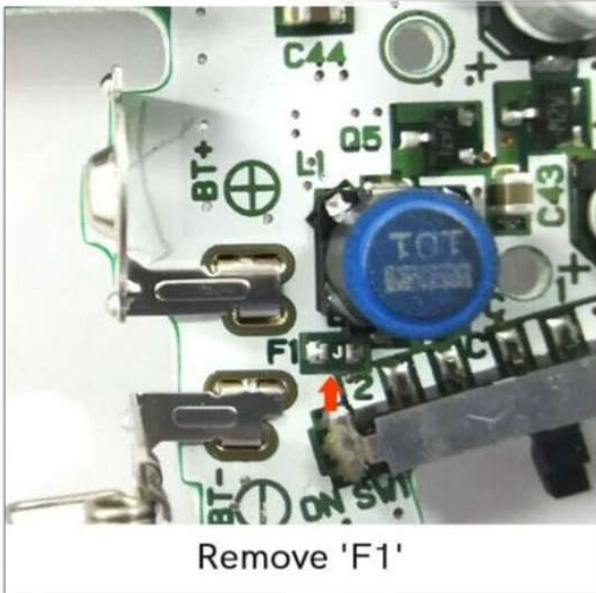


Back

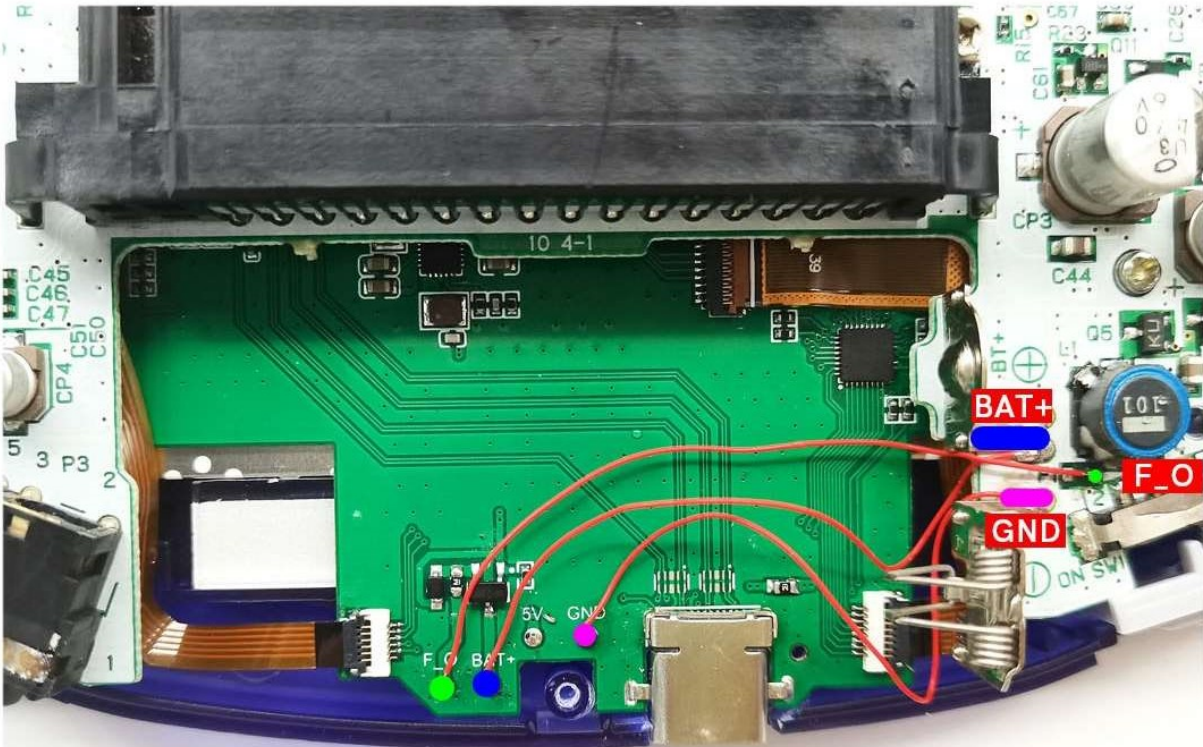


Back





1. Connect the 'BAT' of the HDMI PCB to the 'BAT' of the motherboard.
2. Connect the 'GND' of the HDMI PCB to the 'GND' of the motherboard.
3. Connect the 'F_O' of the HDMI PCB to the 'F_O' of the motherboard.



Done!

