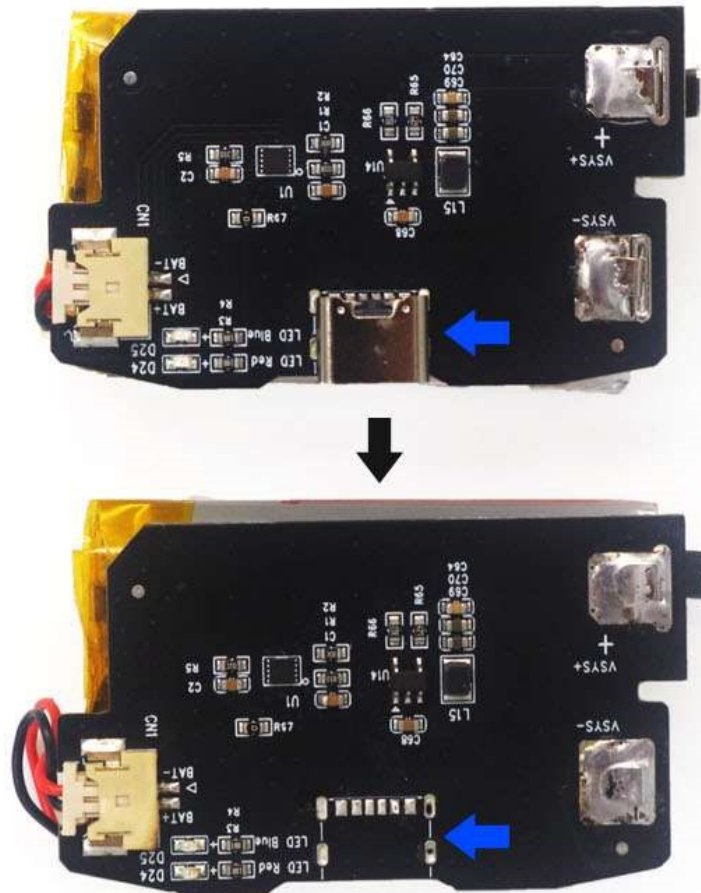


Connect the two red wires as shown below if you had the rechargeable GBA battery

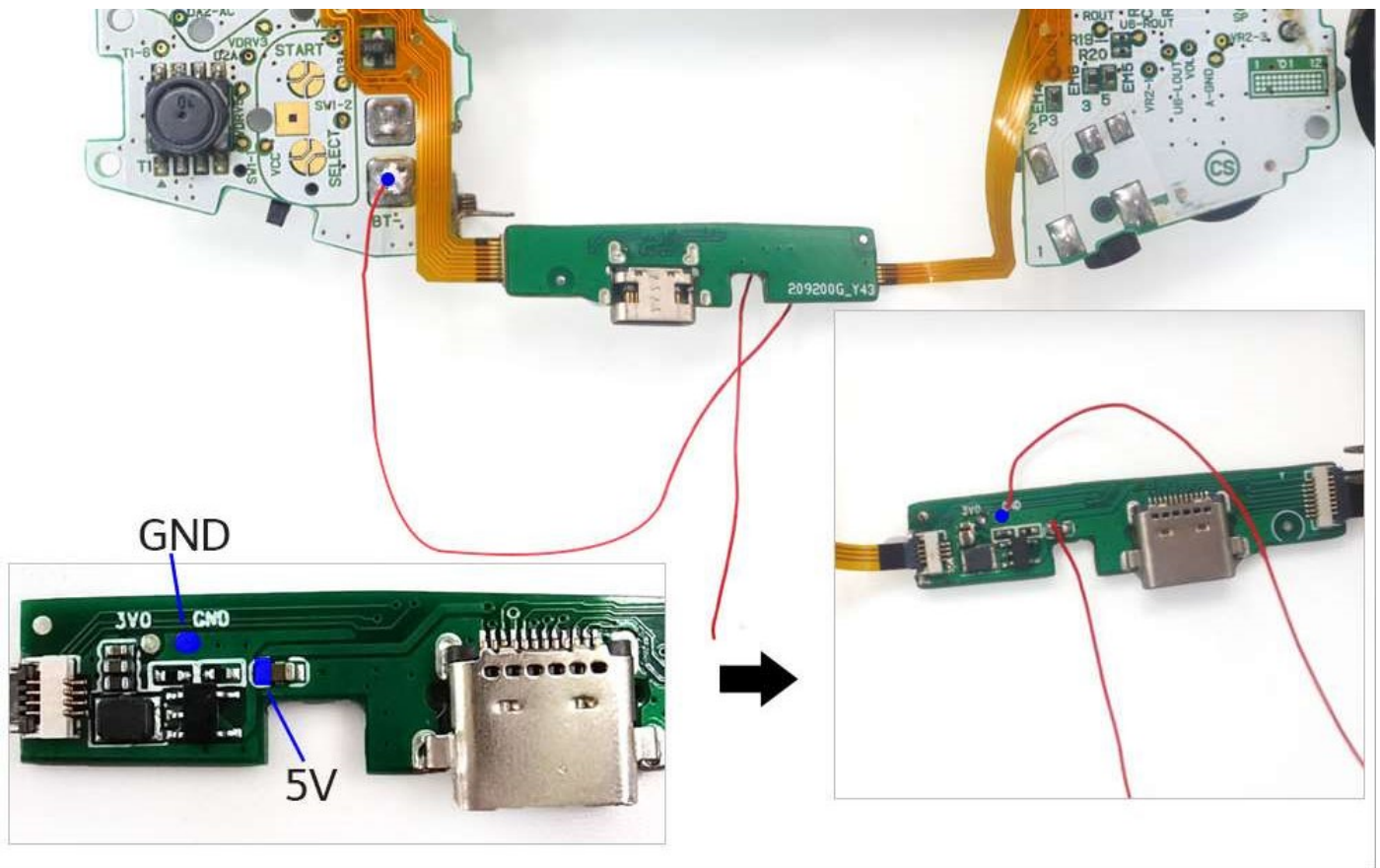
Remove the type-c interface



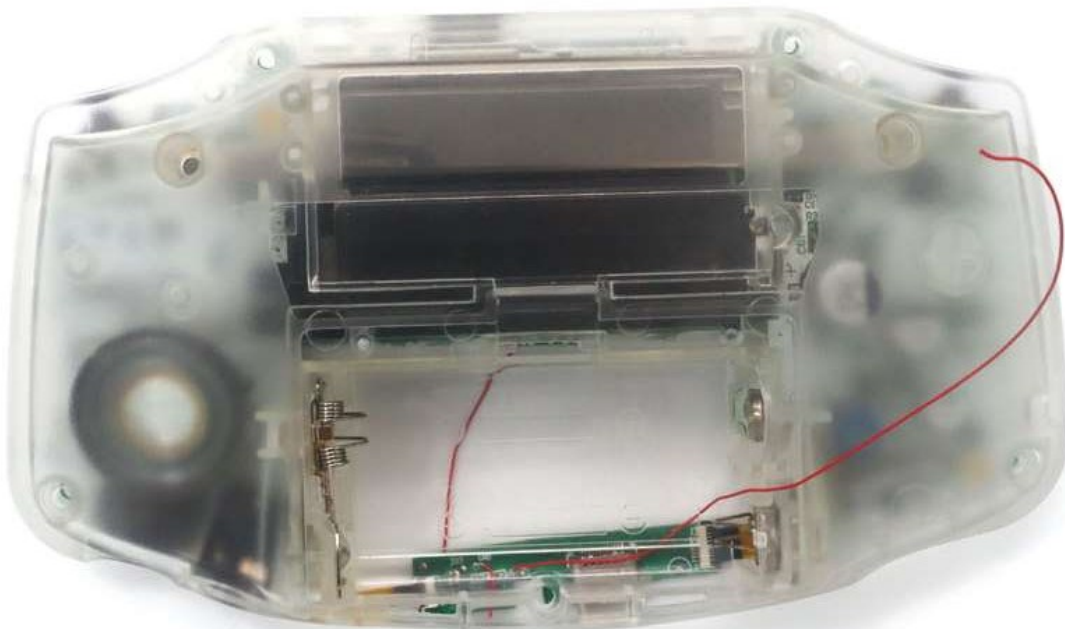
After removing

- 1.Solder to connect 'BAT-' and 'GND' with red wire
- 2.Solder another red wire on the '5V pad'





**Cross the ' 5V' red wire through the shell
as the image shown**



Solder the red wire on the pad as shown below

