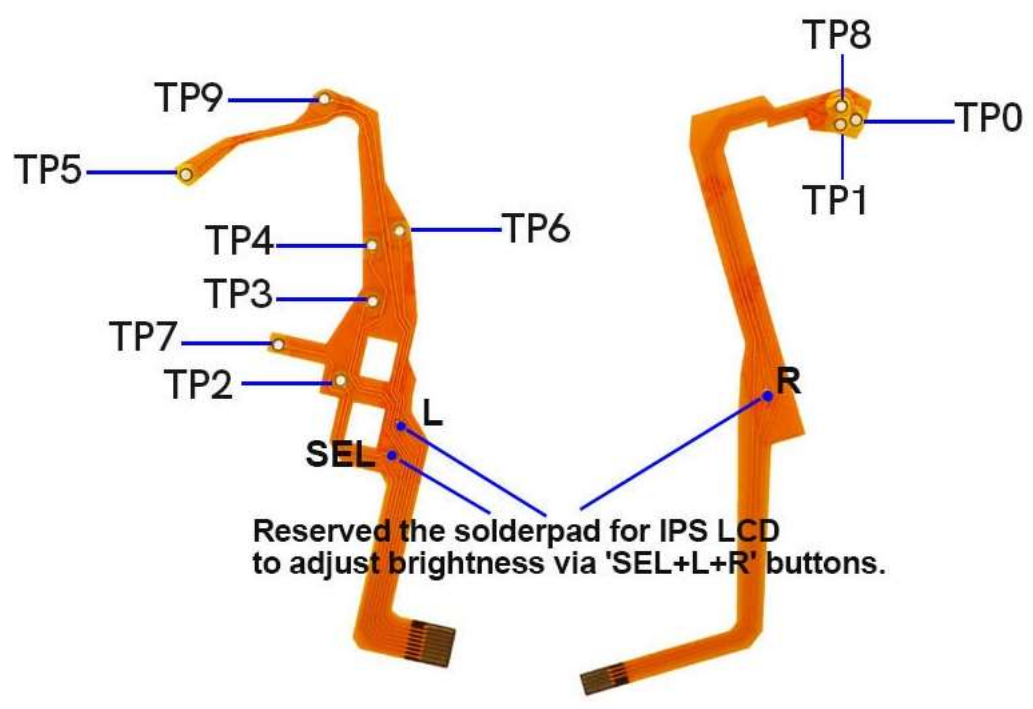
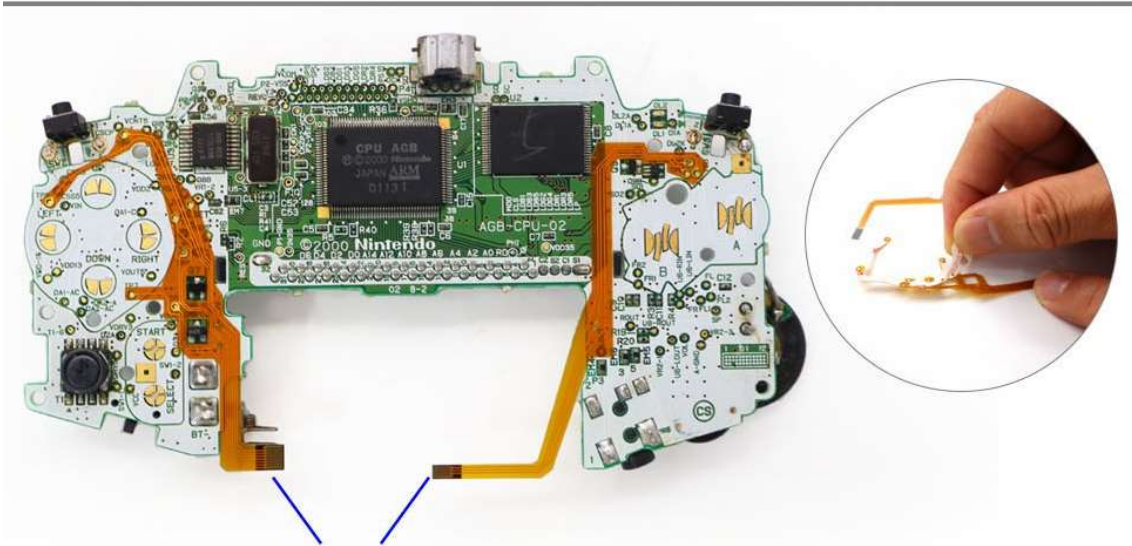




Paste sponge double-sided tape

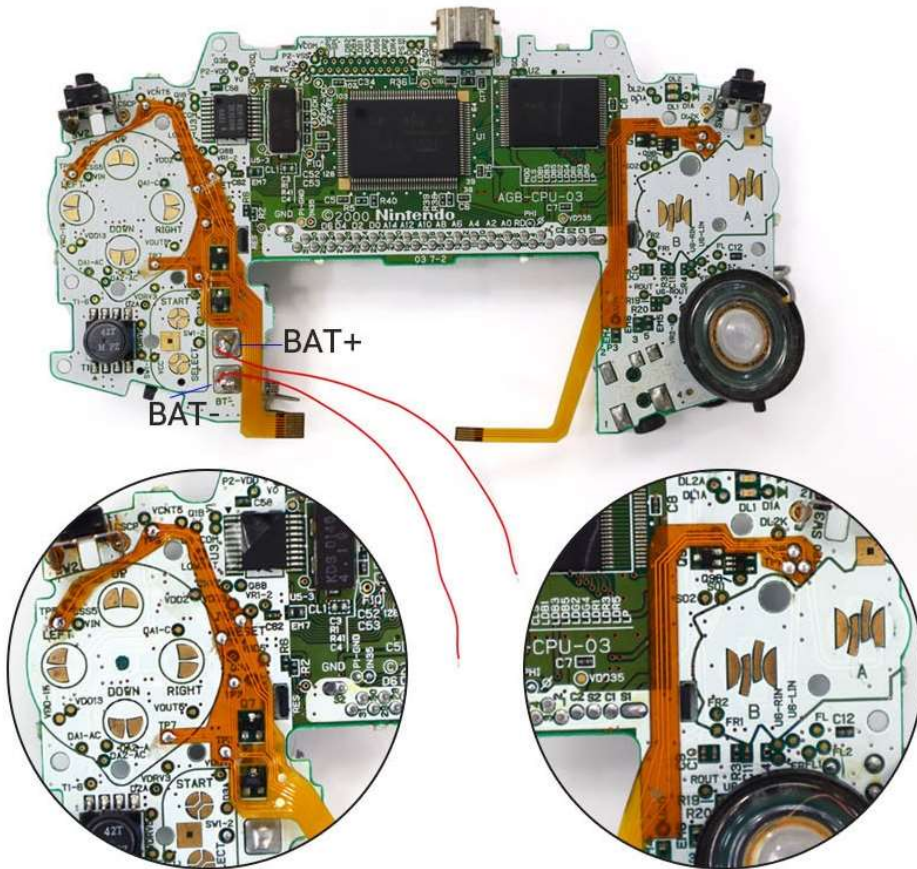


Reserved the solderpad for IPS LCD to adjust brightness via 'SEL+L+R' buttons.

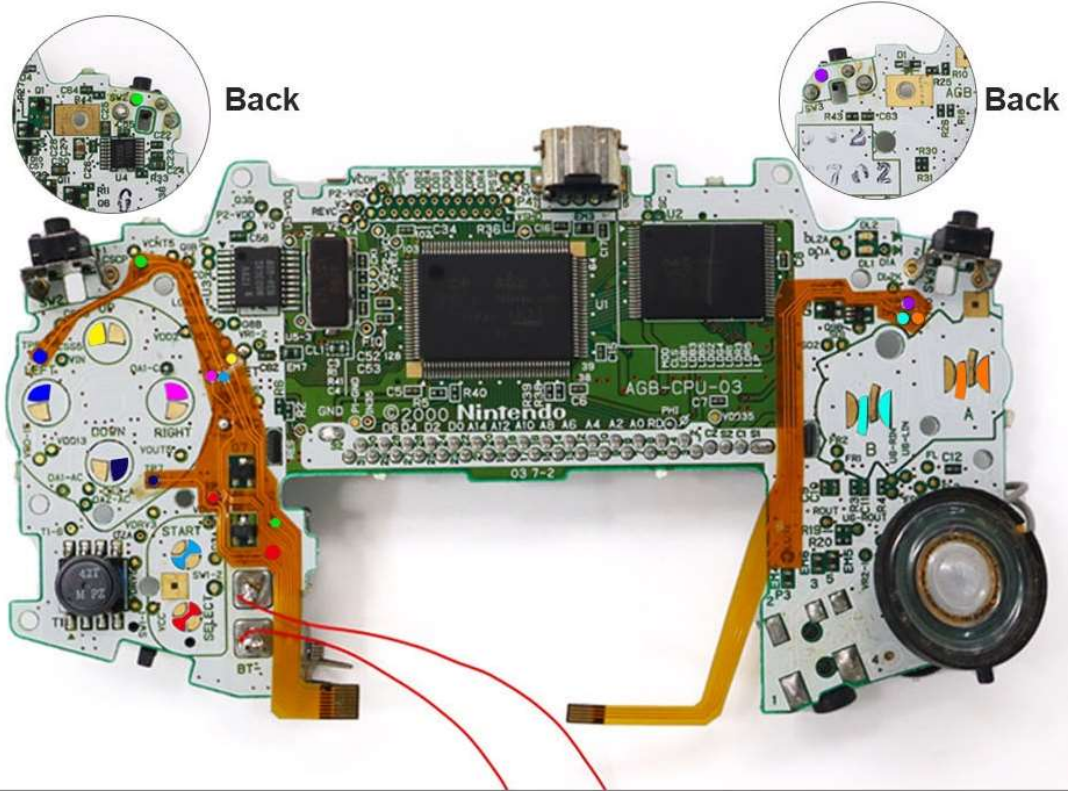


Paste the flex cable on the motherboard

Soldering the flex cable and two wires.



Use multimeter to measuring the solderpad



**Connect the ribbon cable to the small PCB.
Soldering the two wires to the small PCB. 'BAT-' to 'GND', 'BAT+' to '3V0'**



**Put the motherboard into the housing and
paste a small sponge self-adhesive on the TYPE-C socket.**

