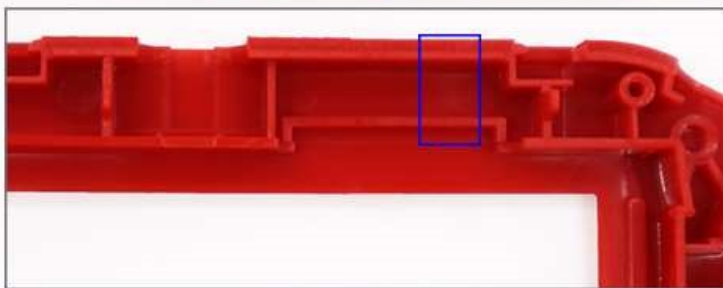
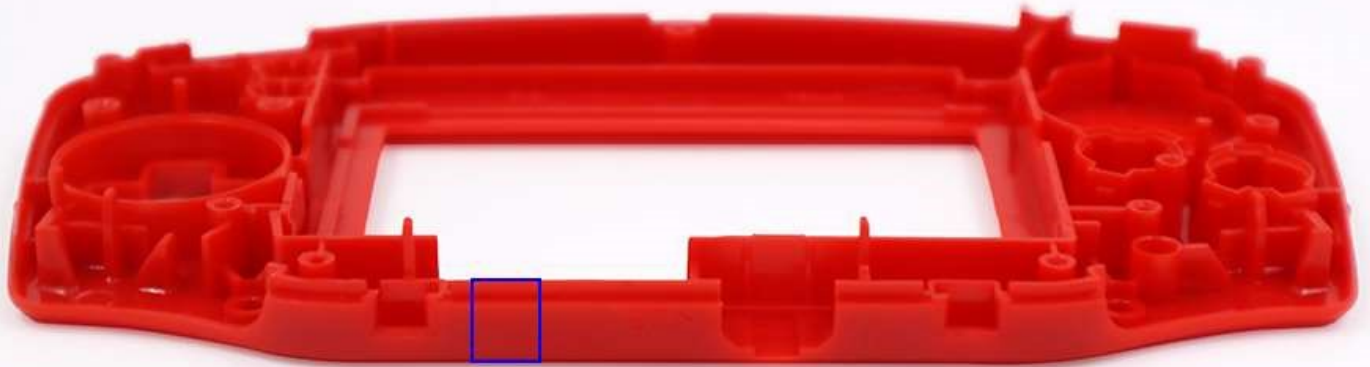
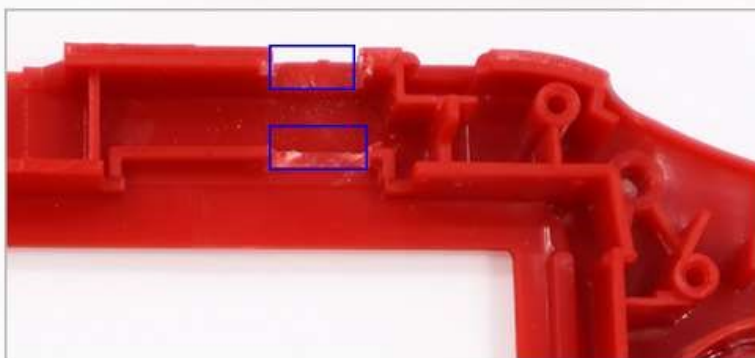


Instruction For 32 pin GBA motherboard and normal LCD

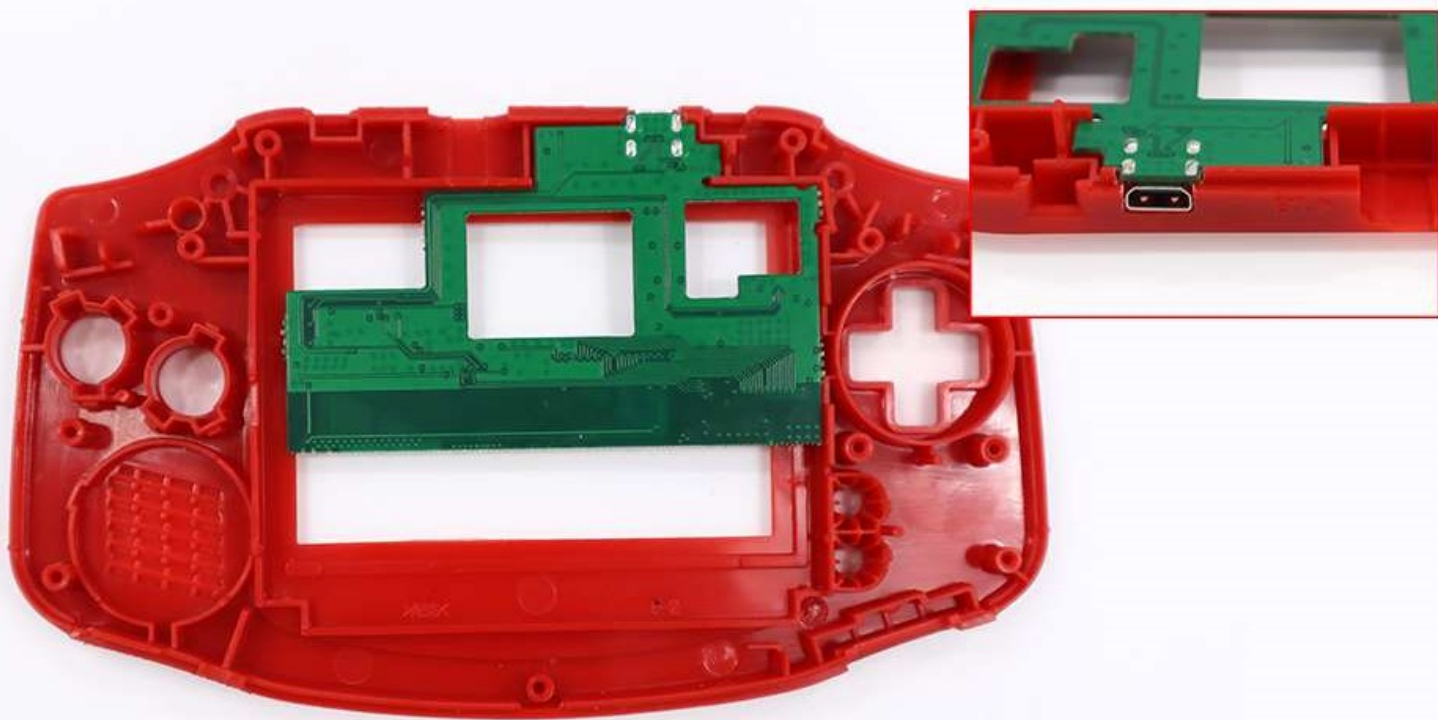


Cut here to put
in the 'HDMI Board'

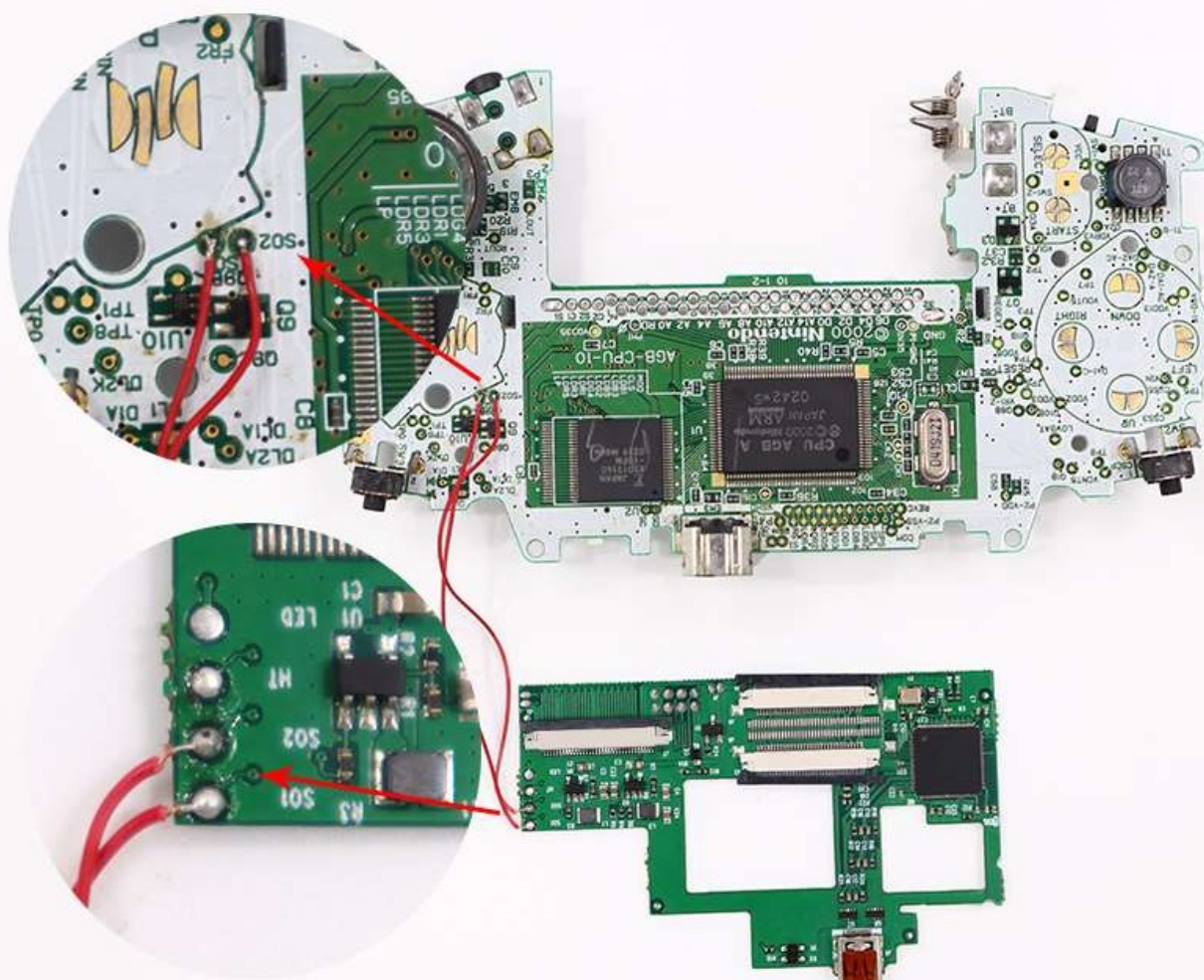


After cutting!

Put the 'HDMI Board' in the shell case to check
if the shell case was cutting good or not.

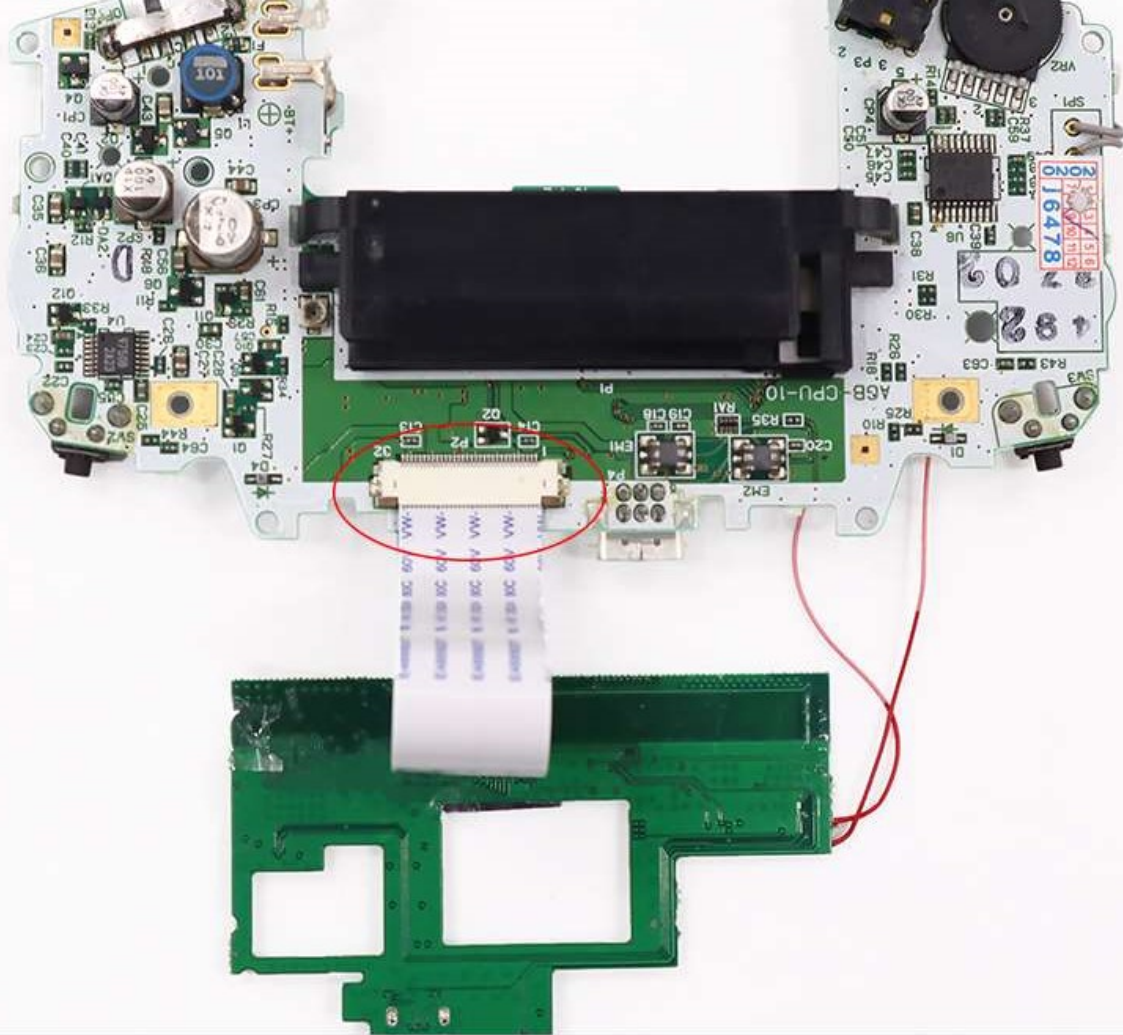


Soldering the 'SO1' and 'SO2' to output the audio via HDMI

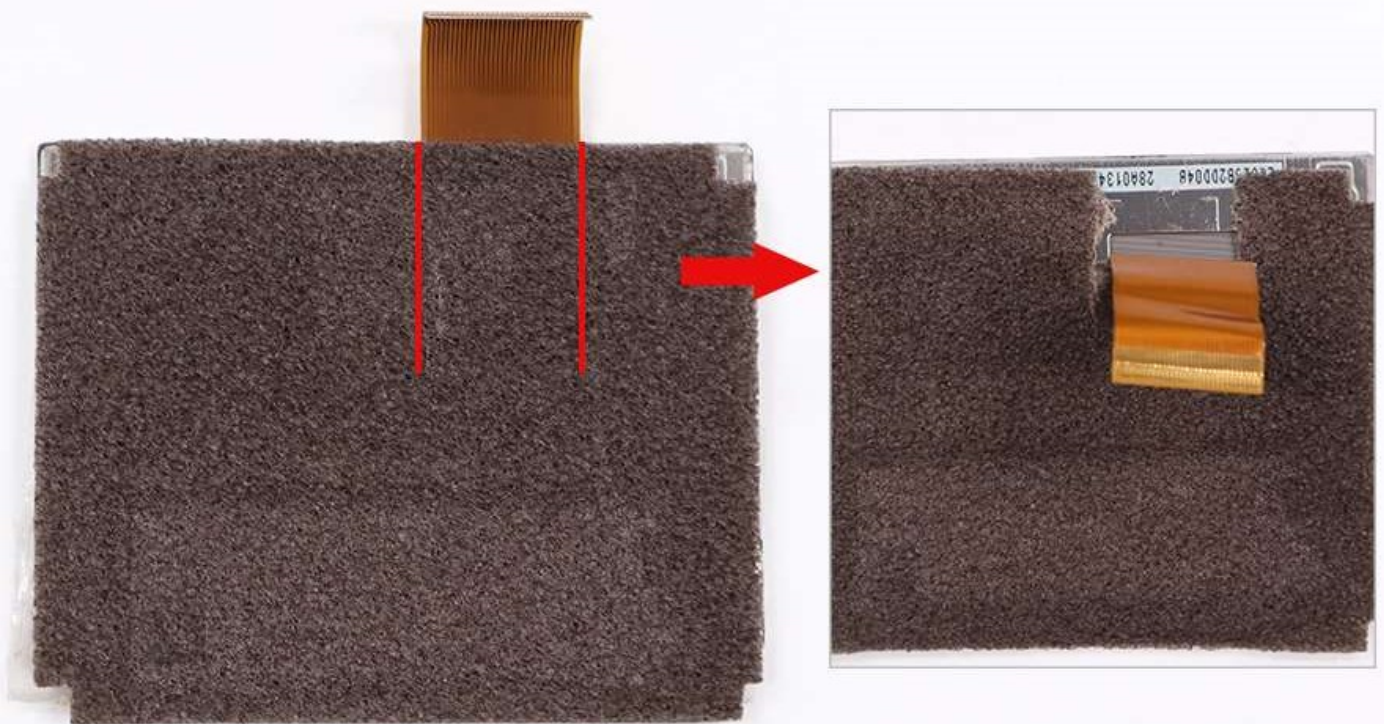


Connect the 'HDMI Board'





Cut the sponge to make the ribbon cable longer.



Connect motherboard and LCD

