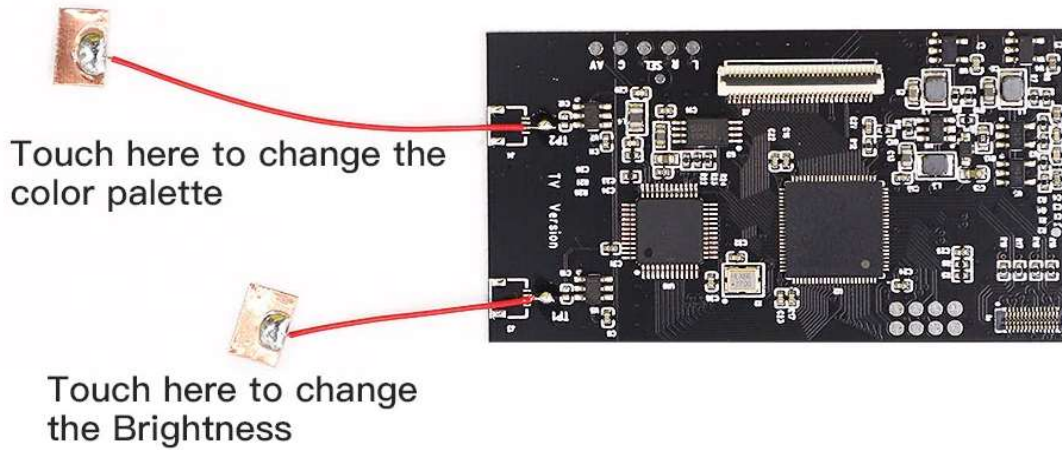


Warning Please throw away the sponge first!

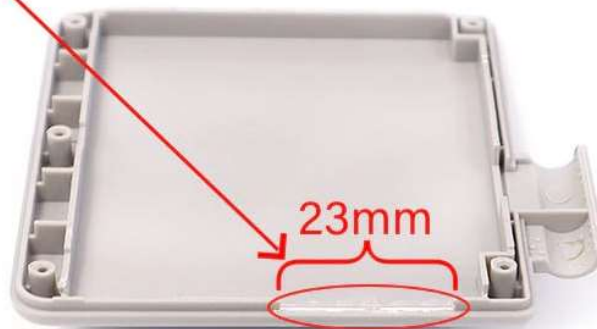
This screen lens same design as the original.
So, it don't need the sponge.



1.Cut here

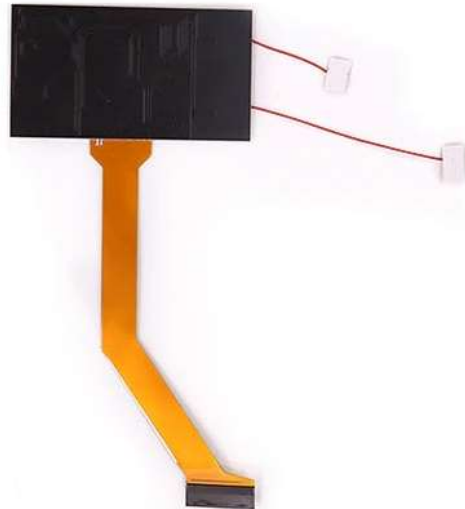
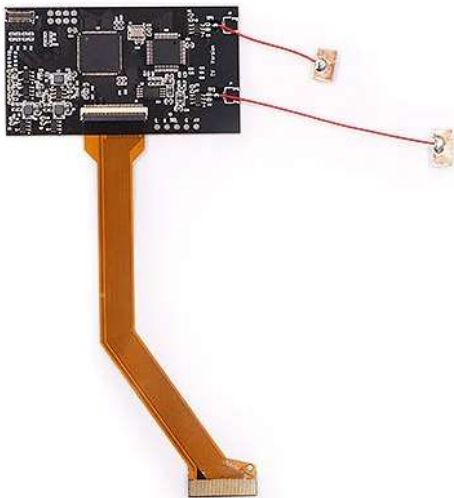


2.Cut here

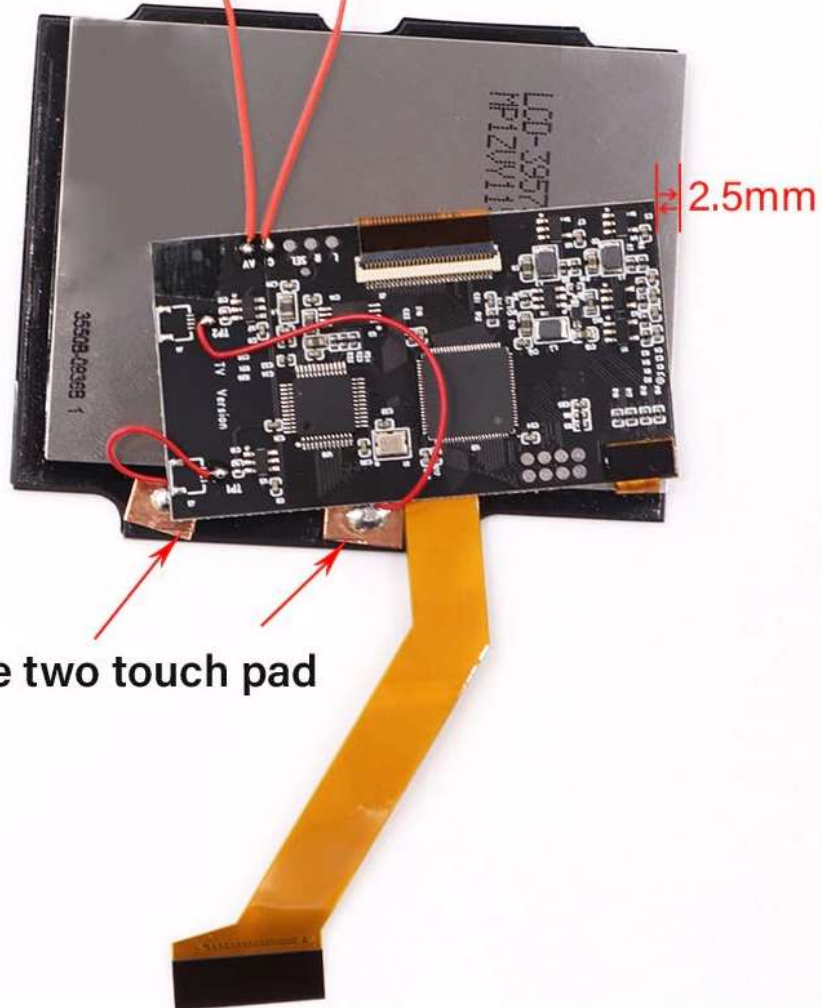




Apply the insulating film on the metal surface.



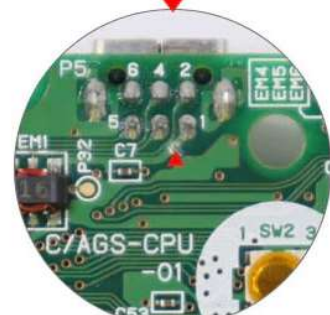
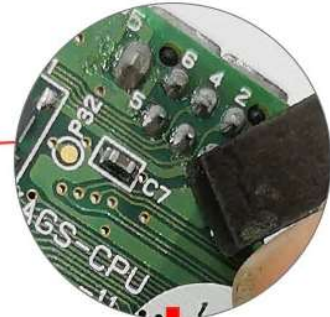
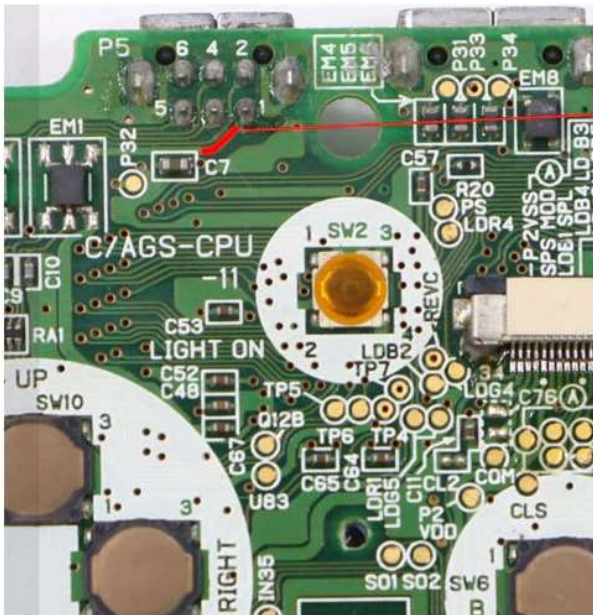
Soldering the wires on the 'AV' and 'G'



Paste the two touch pad



Cut this cable.



After cutting

Connect the 'AV' pad of the black PCB board to the 'Pin1' pad of the mainboard of the console by a wire.

Connect the 'G' pad of the black PCB board to the 'GND' pad of the mainboard of the console by a wire.

Connect the 'BRI' pad of the Ribbon cable to the 'QI28' pad of the mainboard of the console by a wire.

